



Storage Battery Systems LLC  
 N56 W16665 Ridgewood Drive  
 Menomonee Falls, WI 53051

[www.sbsbattery.com](http://www.sbsbattery.com)    800-554-2243    [sbs@sbsbattery.com](mailto:sbs@sbsbattery.com)

**HydroCart Mini**  
 (Part Number INJ-MINI)  
 10 Gallon A/C Powered Mobile Water Supply  
 for the Water Injector System™

## Installation Instructions:

1. Carefully remove the cart from the shipping carton. Remove all packing material from the tank.



2. Fill the tank to the desired level with deionized water.



3. Plug the HydroCart mini into an approved electrical outlet.

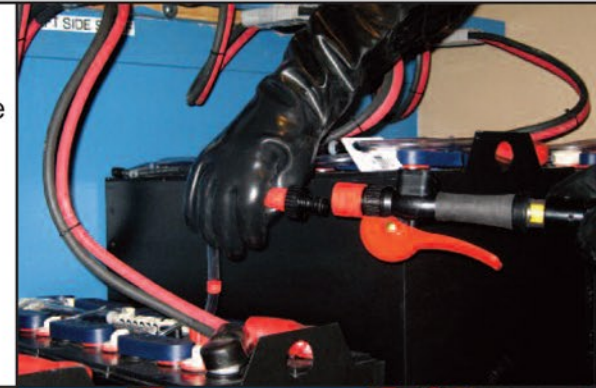


4. Turn the switch on to operate. When all watering is complete, turn the HydroCart mini off and disconnect the power cord. Stow power cord and the output hose.



## Operation Instructions:

1. Connect the Instant Valve Pro™ to the Input Assembly of the BIS installed on the battery.



2. Squeeze the lever completely to fill the battery. **Do Not Partially Squeeze the Lever.**



3. Watch the spinner mounted on the Instant Valve Pro. When it stops spinning, the filling is completed (about 15 seconds, usually).



4. Release the lever and then disconnect the Instant Valve Pro from the BIS.

