

Common Battery Enclosure Sizes

Technical Data

Part No.	No. of Doors	Length (in.) [w/ rain hoods]	Width/Depth (in.)	Height (in.) [w/ 6" legs & eye bolts]	Vent/Fan Size (in.)
SBS-603624STD	1 door	36 [45]	24	60 [67.75]	6
SBS-723624STD	1 door	36 [44]	24	72 [79.75]	6
SBS-723636STD	1 door	36 [45]	36	72 [79.75]	6
SBS-903636STD	1 door	36 [45]	36	90 [97.75]	6
SBS-724824STD	1 door	48 [57]	24	72 [79.75]	6
SBS-724836STD	1 door	48 [57]	36	72 [79.75]	6
SBS-726024STD	1 door	60 [69]	24	72 [79.75]	6
SBS-726036STD*	1 door	60 [69]	36	72 [79.75]	6
SBS-907224STD*	2 door	72 [81]	24	90 [97.75]	6
SBS-907236STD*	2 door	72 [81]	36	90 [97.75]	6
SBS-8611230STD*	3 door	112 [121]	30	86 [93.75]	10
SBS-8614930STD*	4 door	149 [158]	30	86 [93.75]	10

*These models typically use two sets of legs.



Single door cabinet

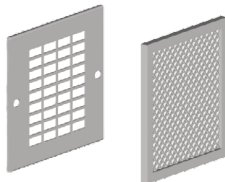


Two door cabinet



Three door cabinet

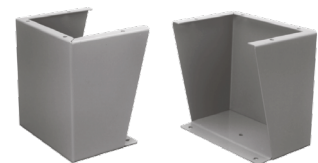
Standard/Typical Accessories



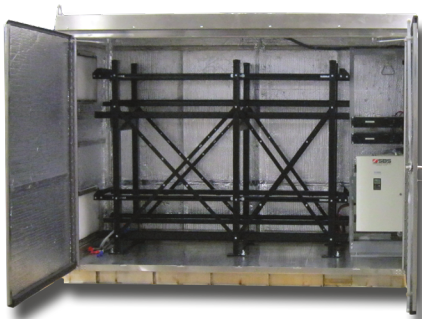
NEMA1 grille & washable aluminum filter kit – Stainless steel grille with thumb screws. Available in 6" and 10" sizes.



Charger subpanel and charger installation – Full or half size subpanels can be installed inside the enclosure to mount the charger and other equipment. This feature is common when a charger is pre-installed inside an enclosure. The subpanel typically mounts to the sides of the cabinets and can telescope towards the front or back of the cabinet.



Floor stand kit (required for NEMA Type 3R applications) – Kit includes two stands. Larger cabinets require two kits (4 stands). 6"H stands standard and 12" stands are optional.



Rack assembly and installation – SBS will assemble and mount the battery rack inside the cabinet so once the enclosure is set in place it can be loaded with the batteries. To permanently mount the rack, the floor stand kit is required.



DC cabling – SBS will supply and connect the DC cables to the charger and provide the proper cable, lugs and insulating covers needed to connect to the supplied battery.