

Automation of the SBS-2003 Bluetooth Workbook

ABSTRACT

Guide for installing and operating the SBS-2003 Automatic Data Capture Workbook.

INTRODUCTION

In an effort to improve the performance and ease of pairing the SBS-2003 and data transfer process, SBS has developed a new Excel workbook to automate the download process.

IDENTIFICATION

This technical note applies to the SBS-2003 Digital Hydrometer and the new SBS-2003 Data Capture – Auto Com.xlsm macro enabled workbook released 1/6/2017.

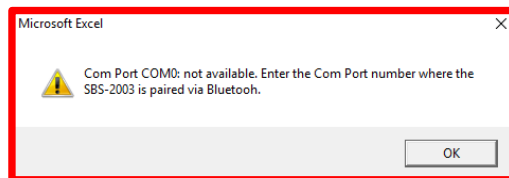
DOWNLOAD THE NEW WORKBOOK HERE:

<https://www.sbsbattery.com/media/downloads/SBS-2003-Data-Capture.xlsm>

Copy the new automated workbook onto your PC prior to pairing the SBS-2003 via Bluetooth.

If you have already paired your SBS-2003, you will need to select current Bluetooth devices and uninstall, un-pair the original pairing of the unit.

The new, automated template comes with the com port assignment defaulted to Com “0”. When you first open the workbook, you will get an error message stating that:

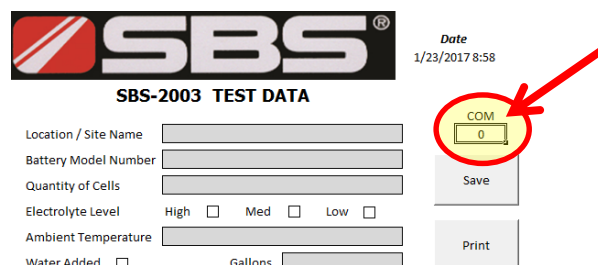


When you see this message it is time to now pair the SBS-2003 with the laptop (http://www.sbsbattery.com/PDFs/SBS-2003_Manual.pdf). Go to the SBS-2003 user’s manual and follow the pairing instructions for the SBS-2003 to find the Com Port number assigned to the communications from the unit.

CONFIGURING AND SAVING THE WORKBOOK

Once the SBS-2003 has been paired to the PC or laptop, the process will give you a Com port number where the SBS-2003 Bluetooth radio communications has been established.

Click the “OK” box on the workbook to close the error message.

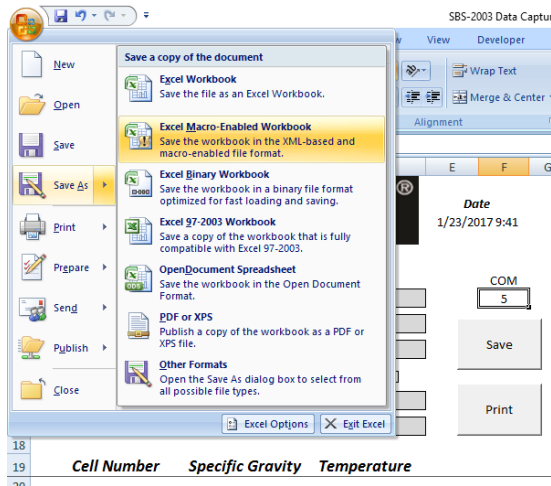


The box for “Com” number should be the active field. Enter your com port number where the SBS-2003 was paired and hit enter.

You will again receive the message that Com Port Com (X) is not available, however, this is because the SBS-2003 is not in the transmit mode at this time.

SAVING THE WORKBOOK FOR FUTURE USE

Now the workbook needs to be saved with the correct com port number assigned in it. This process will make it so the workbook will automatically download the contents of the SBS-2003 as soon as the workbook is opened by clicking on it.



Steps to save:

1. Ensure the correct com port number is in the com box.
2. Click the Office symbol and select "SAVE AS."
3. Workbook must be saved as Excel Macro-Enabled Workbook.

(I replace the "Auto Com 0" with the correct com port number for future reference.)

USING THE NEW AUTOMATED WORKBOOK

Follow the instructions to get into the menu and start the Bluetooth transmission of data.

Double click the SBS-2003 Data Capture – Auto Com "X" to open the workbook and download the data.

File transfer should be completely automated and you should see your readings populate the workbook without any other actions.

SUMMARY

We have tried to automate this process as much as possible. If you experience problems, or have trouble retrieving your data or pairing your unit, please contact us.

If you have any additional questions or concerns, please reach out to us at techsupport@sbsbattery.com and we will be happy to provide more information on this topic.