

Flat Plate Motive Power Batteries

F Series Battery



Design Features and Benefits

- Designed to deliver reliable, consistent power on demand
- Unique positive grid design for better electron flow
- Designed for rigorous and heavy day-in and day-out operations
- Five-fold plate insulation holds active material in place for longer battery life
- Heavy duty design for opportunity and rapid charge applications
- Improved separator design that helps reduce massing and minimizes plate exposure

Applications

- Forklifts and Material Handling
- Pallet Jacks
- Automated Guided Vehicles



User Replaceable Bolt-On Cable Connections

- Cone & thimble bolt easy on/off design
- Eliminates the need for battery technician replacement saving time and money
- Allows facility personnel to make immediate repairs to cut or torn cables 24/7 eliminating downtime
- Increases safety since connectors and contacts can be replaced while the cables are not connected to a live battery

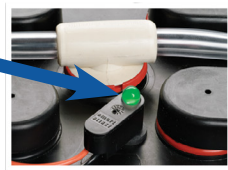


Acid-Resistant Powder-Coated Epoxy Steel Battery Trays

- Resists corrosive effects from acid
- Provides protection from voltage leakage to the truck
- Coated on all inner and outer surfaces for complete protection

Optional Electrolyte Indicator

Reliable electrolyte-level Indicators let you know when electrolyte levels are low



Optical Flip-Top Vent Caps

- Fast, easy filling, low spill and fewer missing caps which can allow leakage and corrosion
- Compatible with all water level indicators



Optional Single-Point Watering System



The Difference is in the Cell



Positive Grid

Thirteen vertical wires are cast from premium antimonial alloy and designed to withstand the rigors of deep cycling and maximum material retention.

Active Material

Manufactured with premium lead oxide to exact specifications using the latest state-of-the-art equipment, applied uniformly and cured under atmospherically computer controlled conditions to assure optimum chemical conversion.

Vertical Slycer-Clat Mat

Wrapped vertically around the positive plate, the fiberglass strands become embedded into the plate surface for active material retention, reducing shedding and prolonging service life.

Koroseal Retainer Mat

Perforated envelope that is tightly wrapped around the two glass mats to form a binder while insulating against mossing and shorting. Wrapped vertically around the positive plate, the fiberglass strands become embedded into the plate surface for active material retention, reducing shedding and prolonging service life.

Negative Edge Protection

Used to ensure against shorts from the negative plate to the positive cell strap. (Used on 85 AH and 125 AH models.)

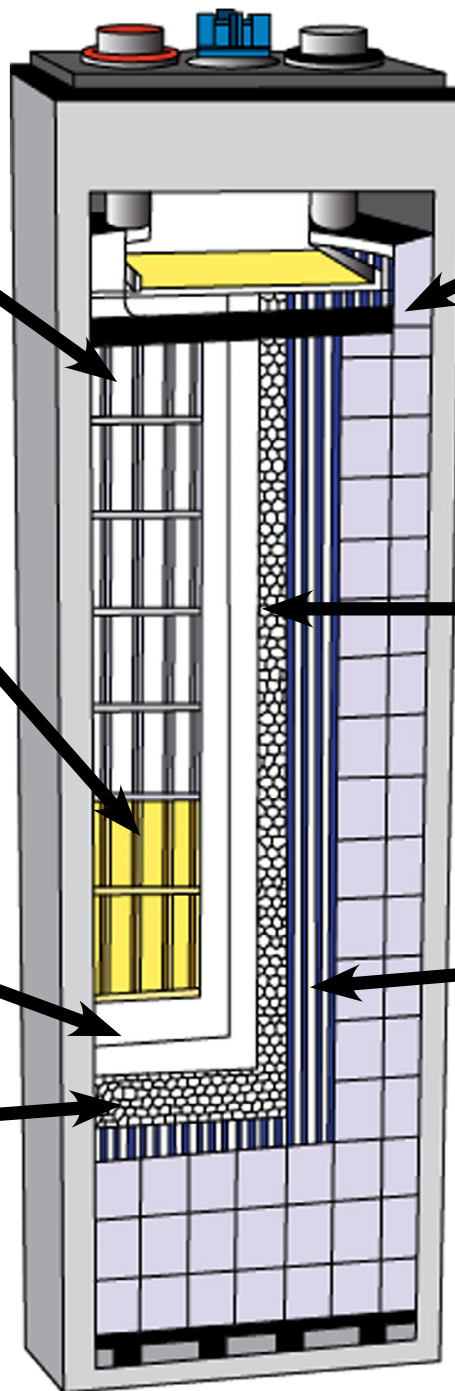
Horizontal Glass Mat

Wrapped horizontally across the positive plate side to side, it supplies a secondary layer of active material retention, and breaks up oxygen gas bubbles produced at the surface of the positive plate.

Protects against shorts from the negative plate to the positive cell strap.

Sleeve Separator

A high porosity sleeved separator insulates the plates from one another and eliminates missing or misaligned separators. This greatly reduces shorts caused by mossing. Acid circulation is also improved.



9002, UL 583 E, EOE, EE approvals